

Solar and Solar BESS Site information

July 2023

Agenda



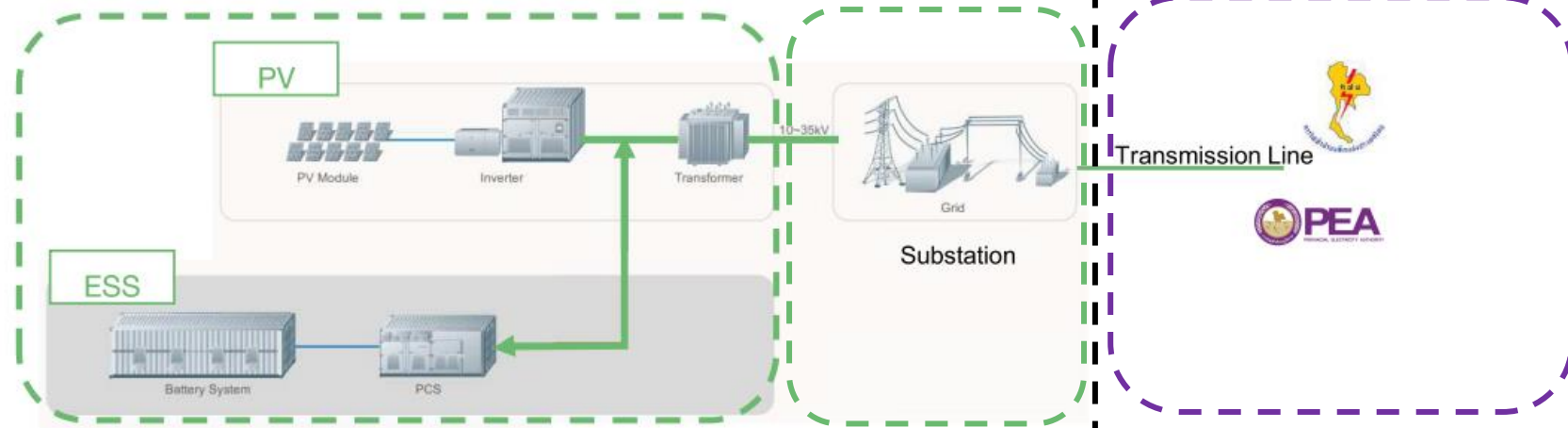
1. Project Overview
2. Site Information
3. Project Timeline

Agenda



1. Project Overview
2. Site Information
3. Project Timeline

Project Overview : Solar Farm and BESS – Packages

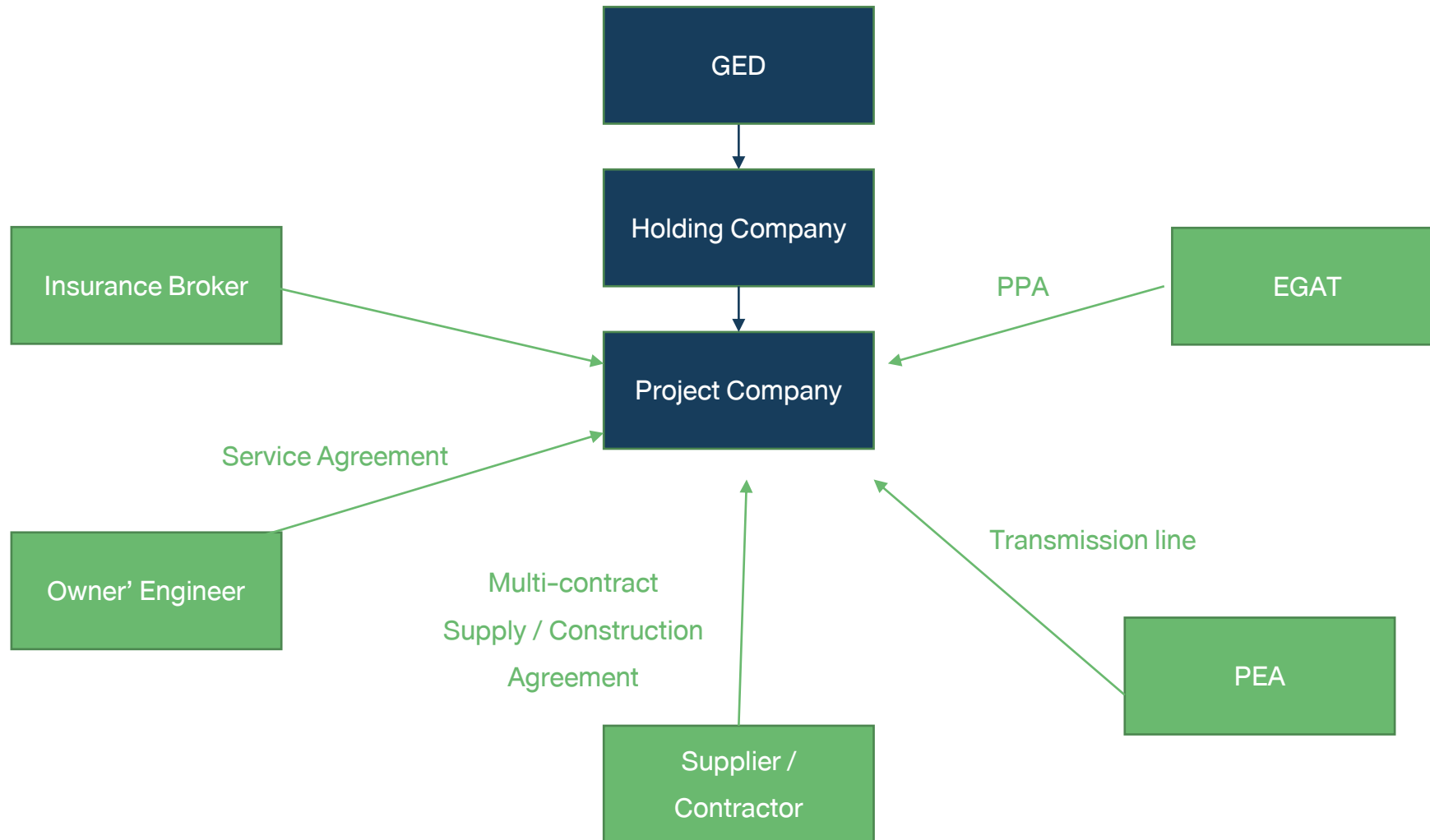


Multi-contract
Supply / Construction
Agreement

- **Equipment Supply Contract**
 - PV Modules
 - PV Inverters
 - BESS
 - Mounting and Piling
 - Cables
 - Switchgear and RMU
 - Power Transformer
 - Inverter/PCS/Aux. Transformer
 - Combiner Box, MDB
- **115kV Substation EPC Contract**
- **Civil / Electrical Installation Contract**

Transmission line by PEA

Project Overview : Project Parties



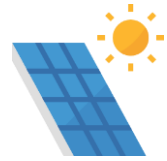
Project Overview : Overall Projects



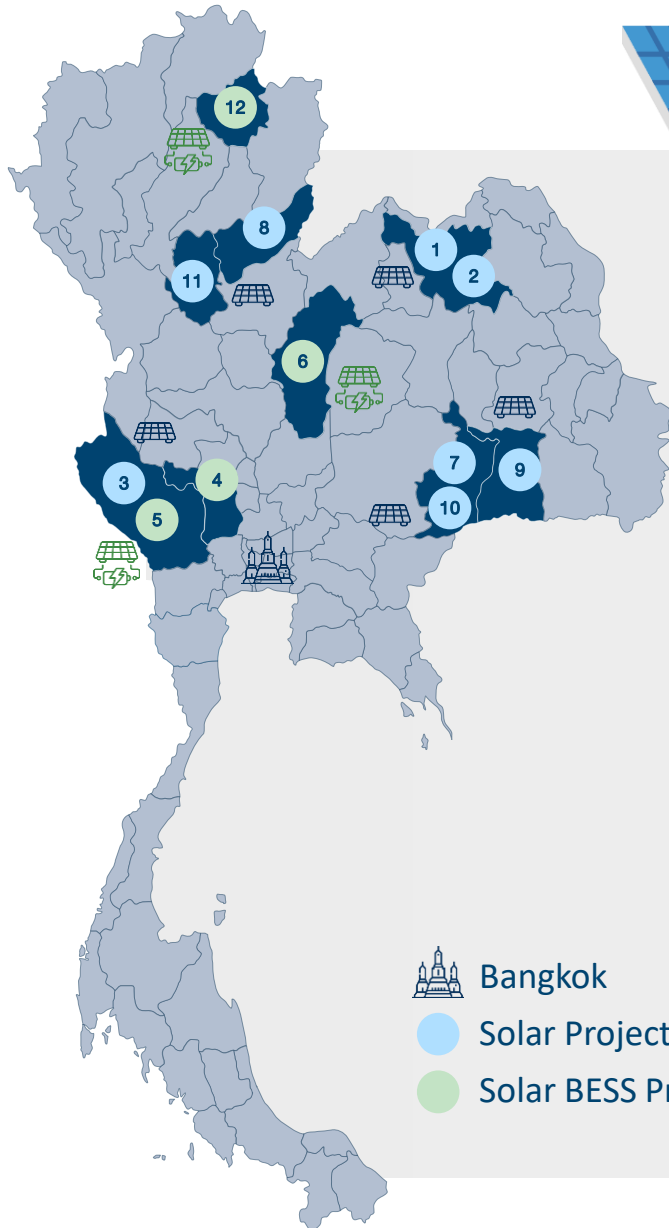
	2567	2568	2569	2570	2571	2572	2573
Solar	3 Projects: 160 MW <ul style="list-style-type: none"> • UDT2: 58 MW • UDT4: 54 MW • KCB1: 48 MW 	5 Projects: 233.31 MW <ul style="list-style-type: none"> • UTD4: 58.71 MW • SKT10: 48 MW • BRR2: 37.8 MW • BRR4: 37.8 MW • SRN5: 51 MW 	1 Project: 68 MW <ul style="list-style-type: none"> • SPB1: 68 MW 		4 Projects 191.6 MW <ul style="list-style-type: none"> • PCB7: 55 MW • PCT12: 34 MW • RCB3: 58 MW • RCB10: 44.6 MW 		
Solar BESS	2 Projects: 135 MW <ul style="list-style-type: none"> • SPB2.2: 75 MW • KCB3: 60 MW 	2 Projects: 121 MW <ul style="list-style-type: none"> • PYO1: 60 MW • PCB14: 61 MW 	2 Projects: 126 MW <ul style="list-style-type: none"> • PBR8: 59 MW • SPB8: 67 MW 	1 Project: 46 MW <ul style="list-style-type: none"> • CHN4: 46 MW 	4 Projects: 226.2 MW <ul style="list-style-type: none"> • SPB2.1: 73.2 MW • NKW1: 43 MW • PCB9: 65 MW • PCT8: 45 MW 	1 Project: 46 MW <ul style="list-style-type: none"> • NKW9: 46 MW 	
Total	5 Projects (295 MW)	7 Projects (355 MW)	6 Projects (371 MW)	1 Project (46 MW)	8 Projects (464.4 MW)	1 Projects (327 MW)	

1st Pool
(12 Projects)

Project Overview : 1st Group (SCOD in Y2024-2025)



Renewable Projects – Solar and Solar BESS



Projects 2024

1	UDT2	Udon Thani	58.00	MW	Site temporary work [1 Nov 23]	SCOD 31 Dec 24
2	UDT4	Udon Thani	54.00	MW		
3	KCB1	Kanchanaburi	48.00	MW	1 st Pilling 1 Jan 24	
4	SPB2.2*	Suphanburi	75.00	MW		
5	KCB3*	Kanchanaburi	60.00	MW		

Projects 2025

6	PCB14*	Phetchabun	61.00	MW	NTP subject to SCOD date**	SCOD Within 2025
7	BRR2	Buriram	37.80	MW		
8	UTD4	Uttaradit	58.71	MW		
9	SRN5	Surin	51.00	MW		
10	BRR4	Buri Rum	37.80	MW		
11	SKT10	Sukhothai	48.00	MW		
12	PYO1*	Phayao	60.00	MW		

**According to a SCOD require by PPA, NTP should be issued 12-14 Months prior to SCOD

Project Overview



Project Summary Information

No.	Project Code	Contracted		Province	Site Coordinate	Land Ownership	Current land uses	T/L Length (km)
1	UDT2	58.00	MW	Udon Thani	<u>17.366127, 102.653135</u>	Owned (Title deeds)	abandoned agricultural	9.3
2	UDT4	54.00	MW	Udon Thani	<u>17.546323, 102.846106</u>	Owned (Title deeds)	abandoned agricultural	7.9
3	KCB1	48.00	MW	Kanchanaburi	<u>14.395972, 99.722017</u>	Owned (Title deeds)	abandoned agricultural	9.8
4	SPB2.2*	75.00	MW	Suphan Buri	<u>14.897875, 99.831069</u>	Owned (Title deeds)	abandoned agricultural	4.27
5	KCB3*	60.00	MW	Kanchanaburi	<u>14.409745, 99.755088</u>	Owned (Title deeds)	abandoned agricultural	12.1
6	PCB14*	61.00	MW	Phetchabun	<u>16.603073, 101.288468</u>	Owned (Title deeds)	abandoned agricultural	16.7
7	BRR2	37.80	MW	Buriram	<u>14.610541, 102.993983</u>	Owned (Title deeds)	abandoned agricultural	1.0
8	UTD4	58.71	MW	Uttaradit	<u>17.56966, 99.940243</u>	Owned (Title deeds)	abandoned agricultural	6.7
9	SRN5	51.00	MW	Surin	<u>15.040245, 103.917293</u>	Owned (Title deeds)	abandoned agricultural	6.5
10	BRR4	37.80	MW	Buri Rum	<u>14.93251, 103.145938</u>	Owned (Title deeds)	abandoned agricultural	12.0
11	SKT10	48.00	MW	Sukhothai	<u>17.550165, 99.912515</u>	Owned (Title deeds)	abandoned agricultural	13.0
12	PYO1*	60.00	MW	Phayao	<u>19.385634, 100.303959</u>	Owned (Title deeds)	abandoned agricultural	16.2

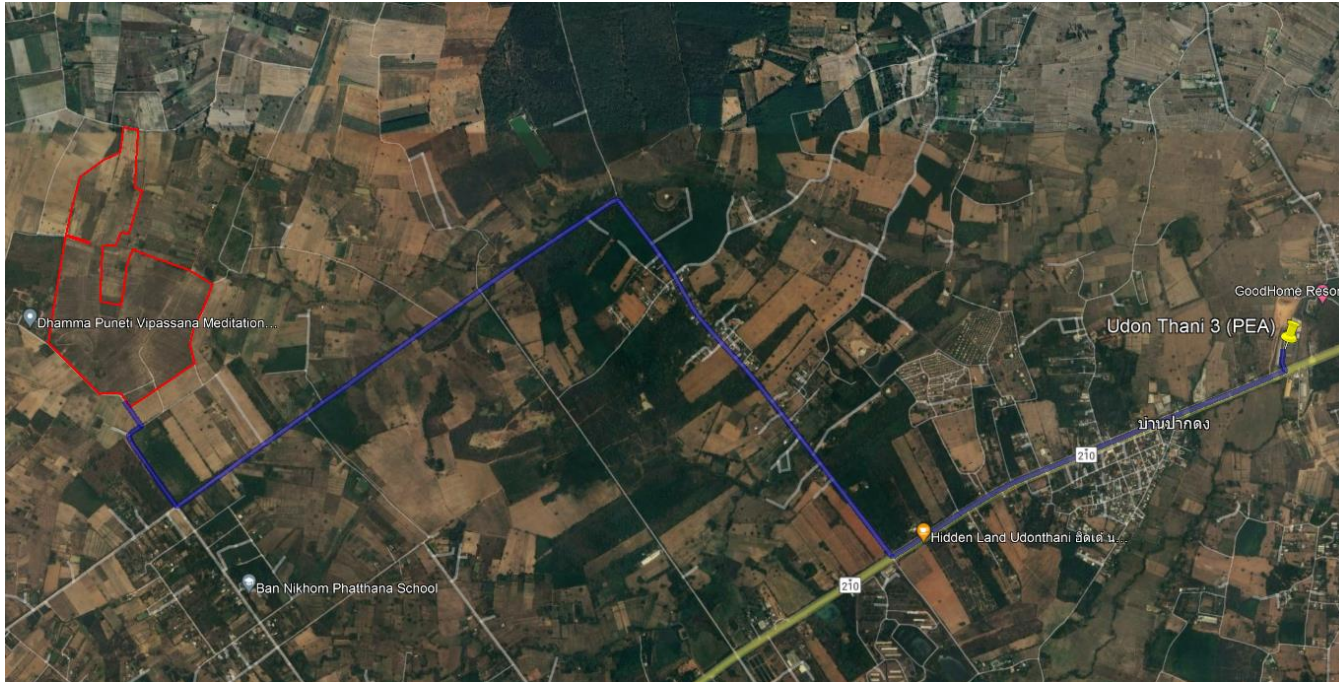
* Solar BESS Project

Agenda



1. Project Overview
2. Site Information 12 Project SCOD Y2024-2025
3. Project Timeline

UDT2 - Saeng Thai Phalangngan



Project Boundary
 Transmission Line
 📌 Connection Point / Substation

Project Detail	
Project Code	UDT2
Project Company	Saeng Thai Phalangngan
Type	Solar
SCOD	2567
Coordinate	17.366127, 102.653135
Type of Land Ownership	Owned
Current Land Use	abandoned agricultural land
Transmission Line Length	9.3 km
Transmission Line Arrangement	Using current road Right of Way
Construction & Operation	

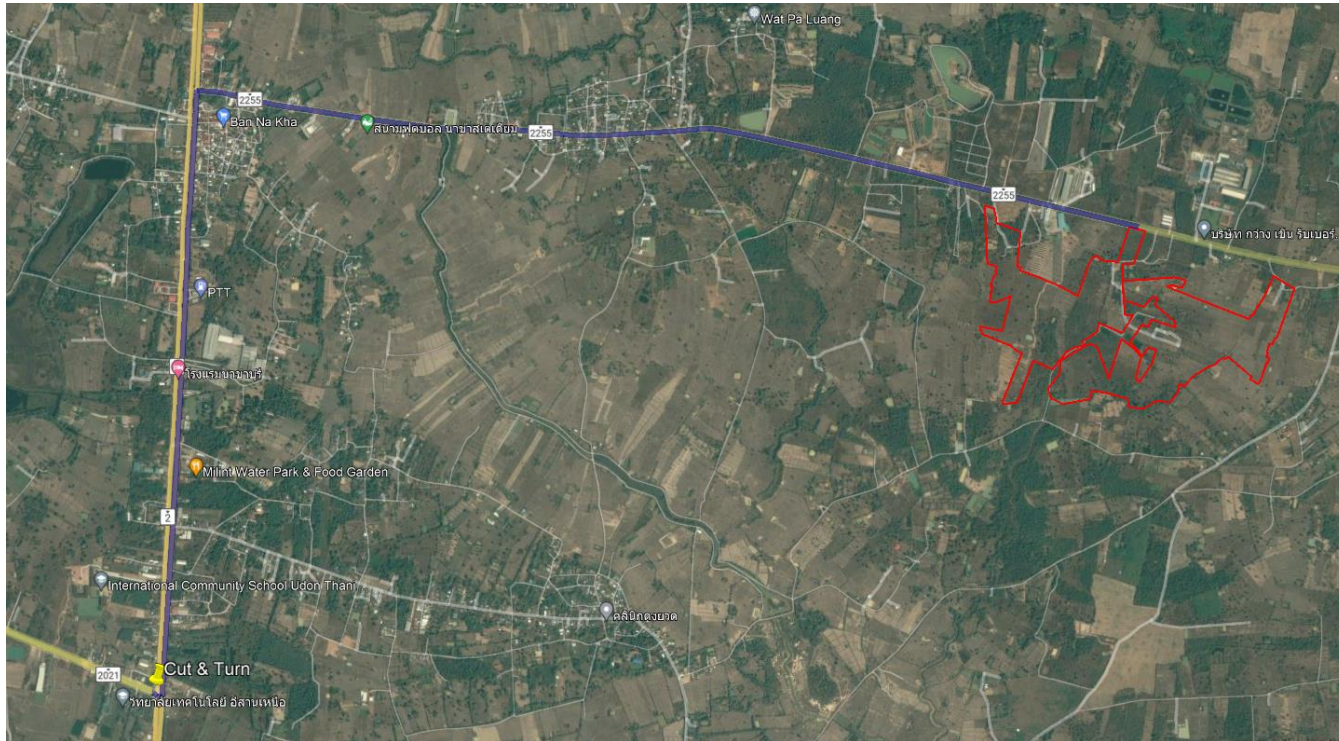
UDT2 - Saeng Thai Phalangngan



Project Boundary
 Transmission Line
 📌 Connection Point / Substation

Project Detail	
Project Code	UDT2
Project Company	Saeng Thai Phalangngan
Type	Solar
SCOD	2567
Coordinate	17.366127, 102.653135
Type of Land Ownership	Owned
Current Land Use	abandoned agricultural land
Transmission Line Length	9.3 km
Transmission Line Arrangement	Using current road Right of Way
Construction & Operation	

UDT4 - Phalangngan Rungrueang



Project Boundary

 Transmission Line

 Connection Point / Substation

Project Detail	
Project Code	UDT4
Project Company	Phalangngan Rungrueang
Type	Solar
SCOD	2567
Coordinate	17.546323, 102.846106
Type of Land Ownership	Owned
Current Land Use	abandoned agricultural land
Transmission Line Length	7.9 km
Transmission Line Arrangement	Using current road Right of Way
Construction & Operation	

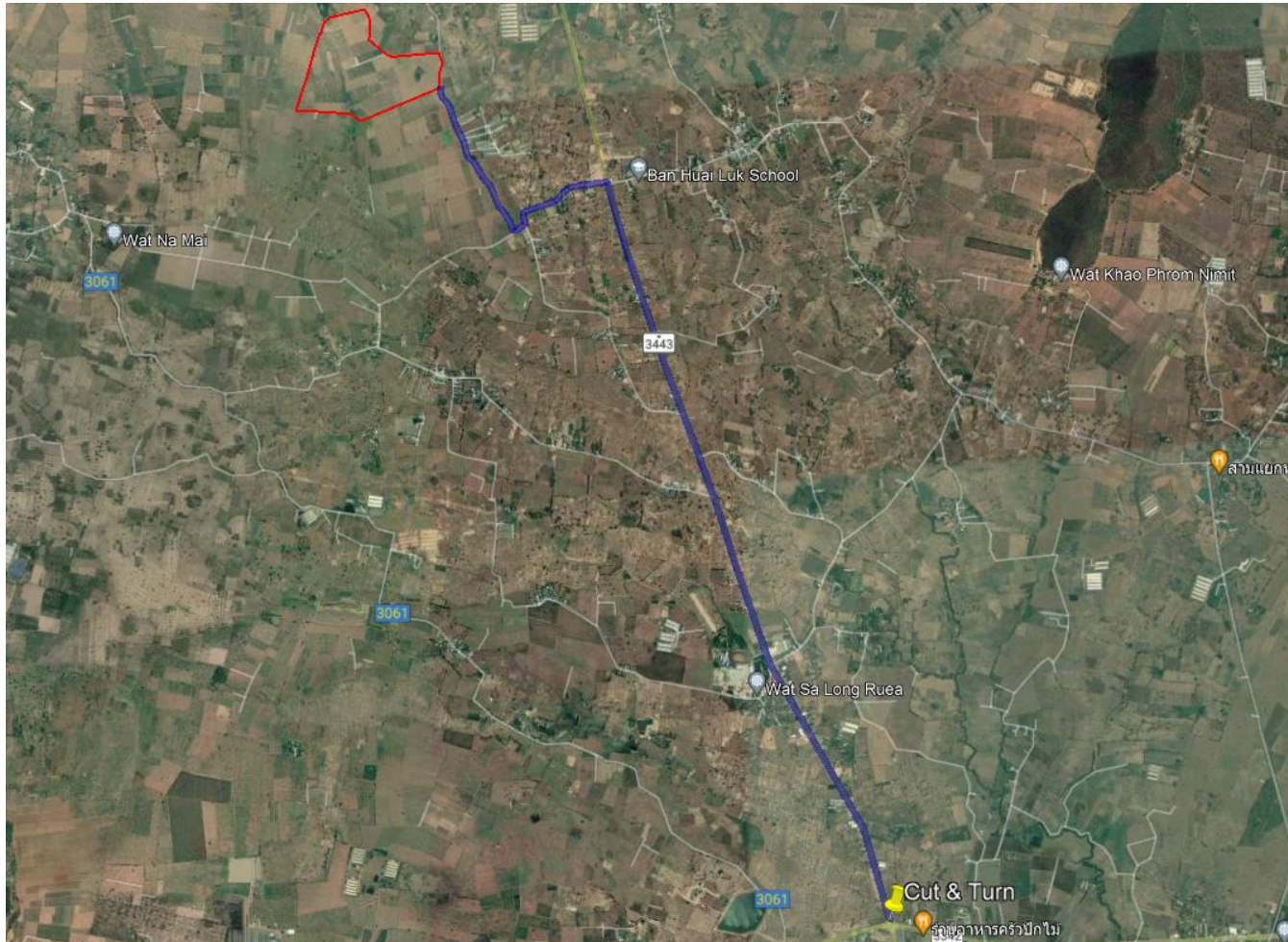
UDT4 - Phalangngan Rungrueang



- Project Boundary
- Transmission Line
- 📌 Connection Point / Substation

Project Detail	
Project Code	UDT4
Project Company	Phalangngan Rungrueang
Type	Solar
SCOD	2567
Coordinate	17.546323, 102.846106
Type of Land Ownership	Owned
Current Land Use	abandoned agricultural land
Transmission Line Length	7.9 km
Transmission Line Arrangement	Using current road Right of Way
Construction & Operation	

KCB1 - Sky Power




Project Boundary
 Transmission Line
 Connection Point / Substation

Project Detail	
Project Code	KCB1
Project Company	Sky Power
Type	Solar
SCOD	2567
Coordinate	14.395972, 99.722017
Type of Land Ownership	Owned
Current Land Use	abandoned agricultural land
Transmission Line Length	9.8 km
Transmission Line Arrangement	Using current road Right of Way
Construction & Operation	

KCB1 - Sky Power



 Project Boundary  Transmission Line  Connection Point / Substation

Project Detail	
Project Code	KCB1
Project Company	Sky Power
Type	Solar
SCOD	2567
Coordinate	14.395972, 99.722017
Type of Land Ownership	Owned
Current Land Use	abandoned agricultural land
Transmission Line Length	9.8 km
Transmission Line Arrangement	Using current road Right of Way
Construction & Operation	

SPB2.2 - Breeze and Shine Power



- Project Boundary
- Transmission Line
- 📌 Connection Point / Substation

Project Detail	
Project Code	SPB2.2
Project Company	Breeze and Shine Power
Type	Solar BESS
SCOD	2567
Coordinate	14.897875, 99.831069
Type of Land Ownership	Owned
Current Land Use	abandoned agricultural land
Transmission Line Length	4.27 km
Transmission Line Arrangement	Using current road Right of Way
Construction & Operation	

SPB2.2 - Breeze and Shine Power



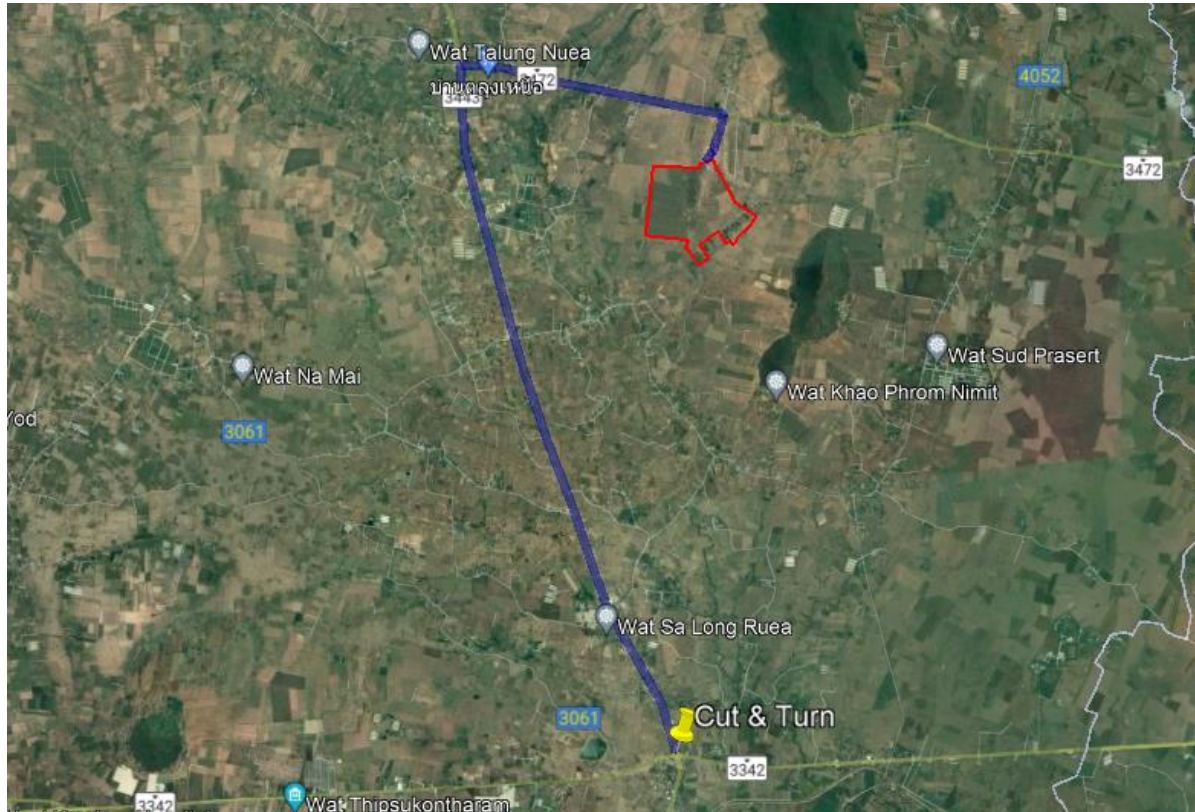
Project Boundary

 Transmission Line

 Connection Point / Substation

Project Detail	
Project Code	SPB2.2
Project Company	Breeze and Shine Power
Type	Solar BESS
SCOD	2567
Coordinate	14.897875, 99.831069
Type of Land Ownership	Owned
Current Land Use	abandoned agricultural land
Transmission Line Length	4.27 km
Transmission Line Arrangement	Using current road Right of Way
Construction & Operation	

KCB3 - Solar Development



- Project Boundary
- Transmission Line
- 📌 Connection Point / Substation

Project Detail	
Project Code	KCB3
Project Company	Solar Development
Type	Solar BESS
SCOD	2567
Coordinate	14.409745, 99.755088
Type of Land Ownership	Owned
Current Land Use	abandoned agricultural land
Transmission Line Length	12.1 km
Transmission Line Arrangement	Using current road Right of Way
Construction & Operation	

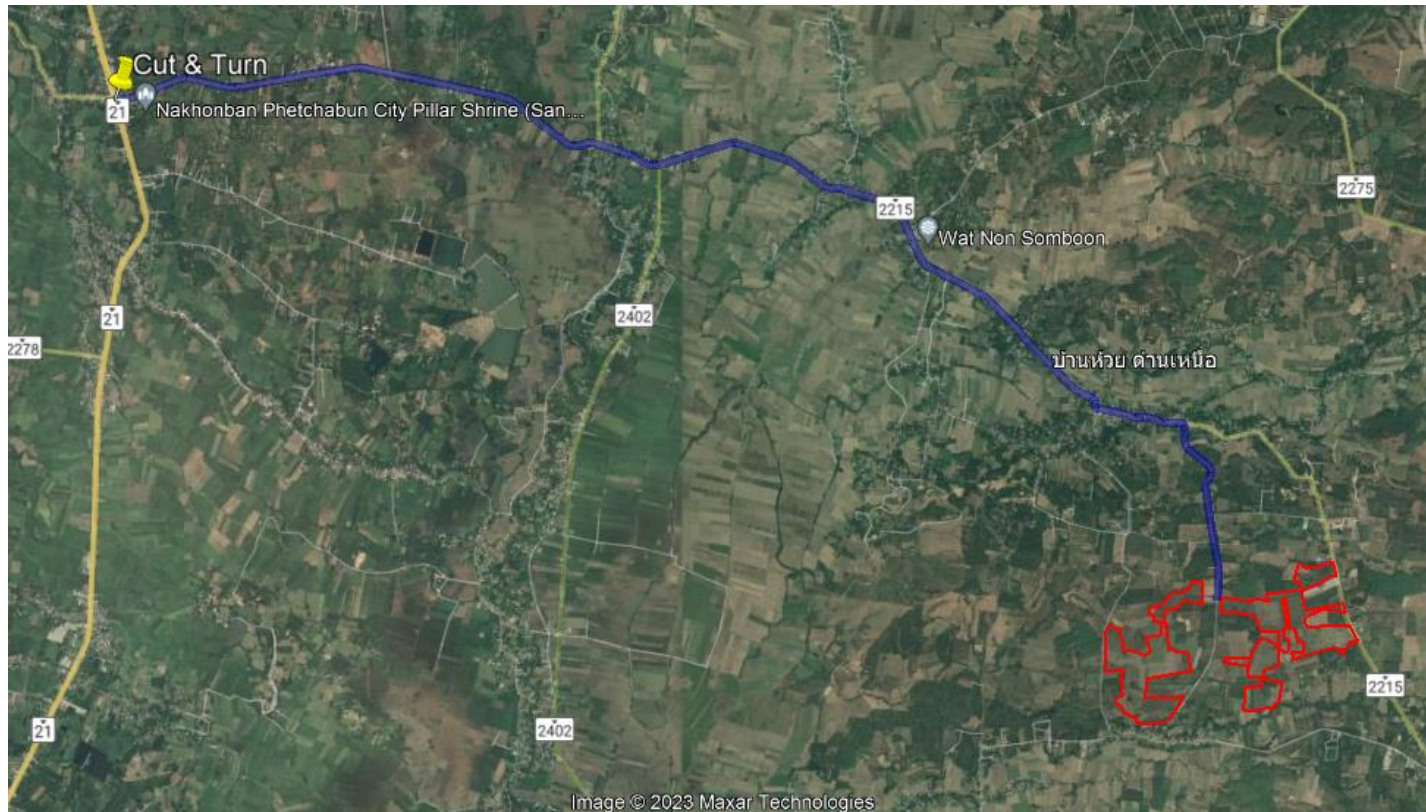
KCB3 - Solar Development



- Project Boundary
- Transmission Line
- 📌 Connection Point / Substation

Project Detail	
Project Code	KCB3
Project Company	Solar Development
Type	Solar BESS
SCOD	2567
Coordinate	14.409745, 99.755088
Type of Land Ownership	Owned
Current Land Use	abandoned agricultural land
Transmission Line Length	12.1 km
Transmission Line Arrangement	Using current road Right of Way
Construction & Operation	

PCB14 - Energy First



- Project Boundary
- Transmission Line
- 📌 Connection Point / Substation

Project Detail	
Project Code	PCB14
Project Company	Energy First
Type	Solar BESS
SCOD	2568
Coordinate	16.603073, 101.288468
Type of Land Ownership	Owned
Current Land Use	abandoned agricultural land
Transmission Line Length	16.7 km
Transmission Line Arrangement	Using current road Right of Way
Construction & Operation	

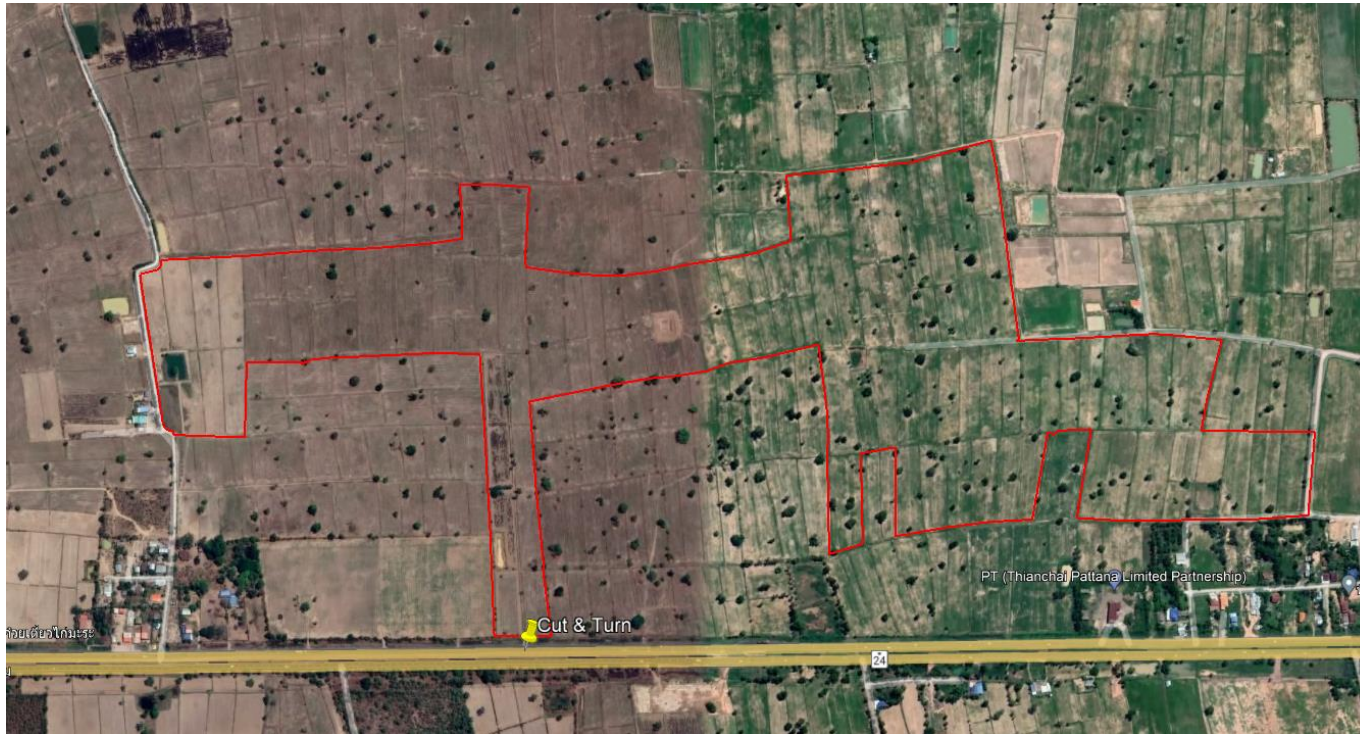
PCB14 - Energy First



- Project Boundary
- Transmission Line
- 📌 Connection Point / Substation

Project Detail	
Project Code	PCB14
Project Company	Energy First
Type	Solar BESS
SCOD	2568
Coordinate	16.603073, 101.288468
Type of Land Ownership	Owned
Current Land Use	abandoned agricultural land
Transmission Line Length	16.7 km
Transmission Line Arrangement	Using current road Right of Way
Construction & Operation	

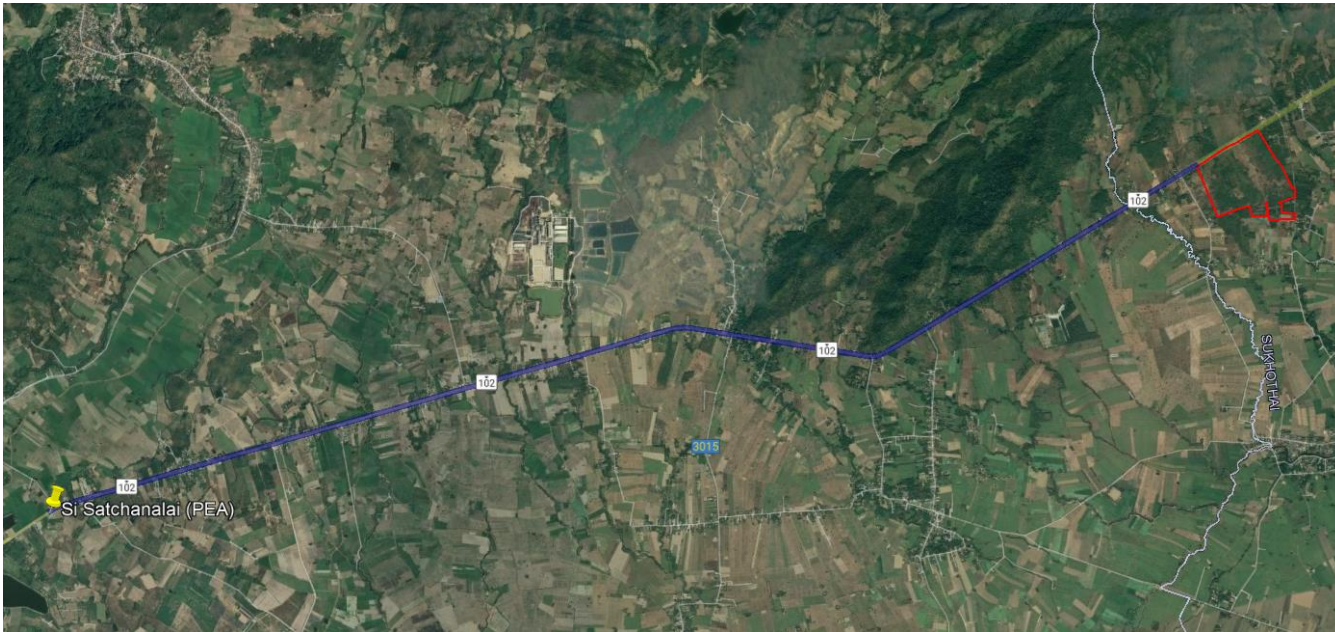
BRR2 - Isaan Clean Tech



 Project Boundary  Connection Point / Substation

Project Detail	
Project Code	BRR2
Project Company	Isaan Clean Tech
Type	Solar
SCOD	2568
Coordinate	14.610541, 102.993983
Type of Land Ownership	Owned
Current Land Use	abandoned agricultural land
Transmission Line Length	1 km
Transmission Line Arrangement	Using current road Right of Way
Construction & Operation	

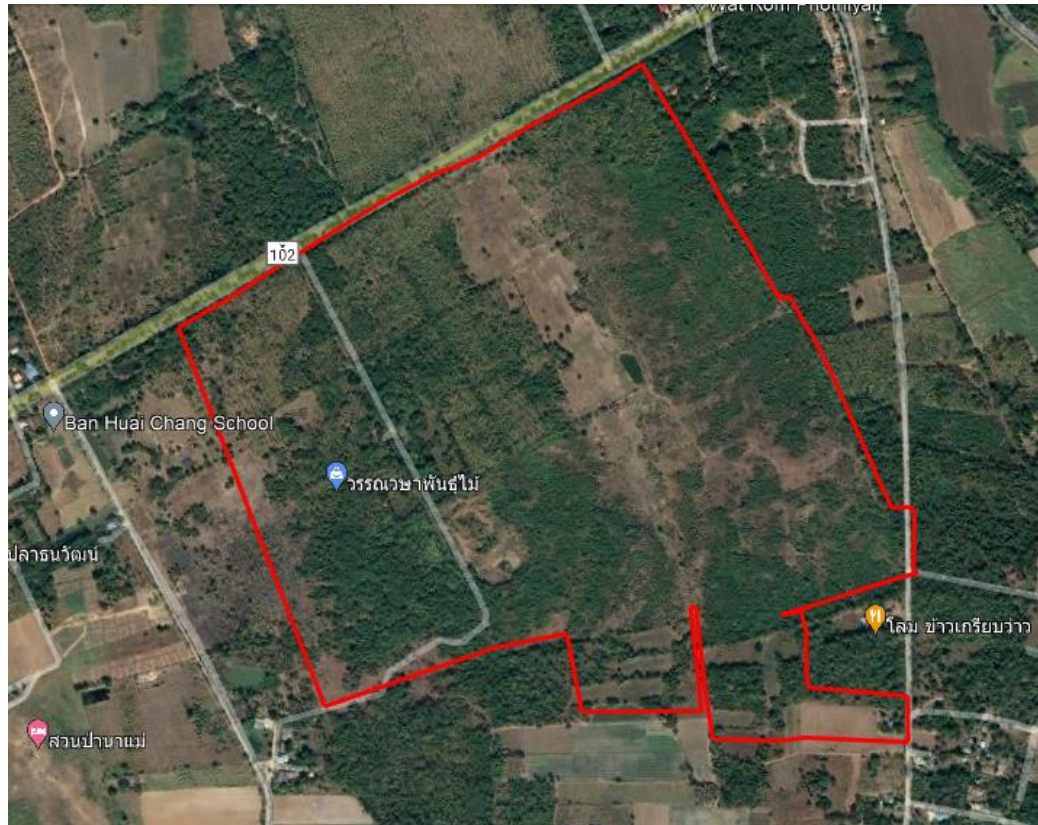
UTD4 - Saeng Pat Phalangngan



- Project Boundary
- Transmission Line
- 📌 Connection Point / Substation

Project Detail	
Project Code	UTD4
Project Company	Saeng Pat Phalangngan
Type	Solar
SCOD	2568
Coordinate	17.56966, 99.940243
Type of Land Ownership	Owned
Current Land Use	abandoned agricultural land
Transmission Line Length	6.7 km
Transmission Line Arrangement	Using current road Right of Way
Construction & Operation	

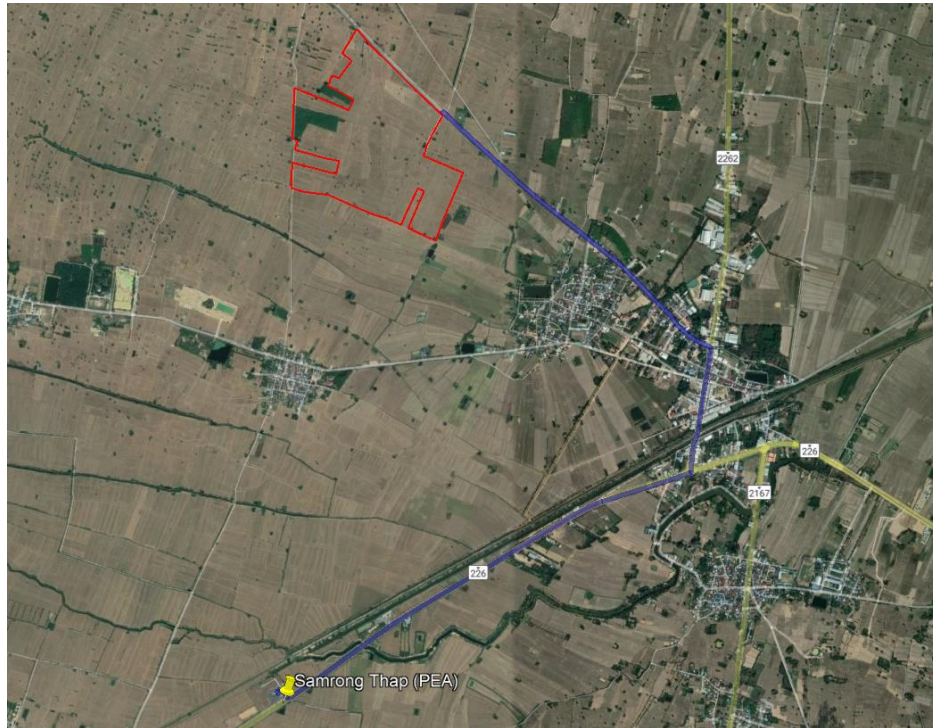
UTD4 - Saeng Pat Phalangngan



Project Boundary
 Transmission Line
 📌 Connection Point / Substation

Project Detail	
Project Code	UTD4
Project Company	Saeng Pat Phalangngan
Type	Solar
SCOD	2568
Coordinate	17.56966, 99.940243
Type of Land Ownership	Owned
Current Land Use	abandoned agricultural land
Transmission Line Length	6.7 km
Transmission Line Arrangement	Using current road Right of Way
Construction & Operation	

SRN5 - Thai Pat Solar






- Project Boundary
- Transmission Line
- 📌 Connection Point / Substation

Project Detail	
Project Code	SRN5
Project Company	Thai Pat Solar
Type	Solar
SCOD	2568
Coordinate	15.040245, 103.917293
Type of Land Ownership	Owned
Current Land Use	abandoned agricultural land
Transmission Line Length	6.5 km
Transmission Line Arrangement	Using current road Right of Way
Construction & Operation	

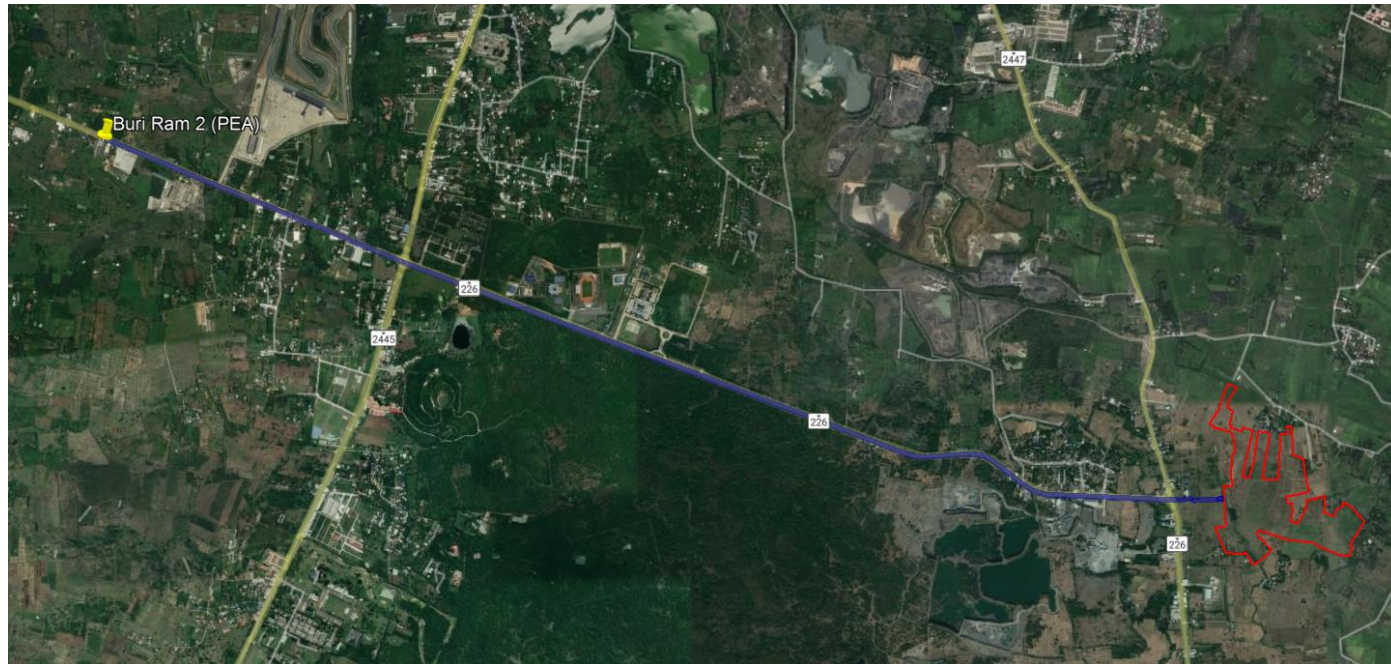
SRN5 - Thai Pat Solar



 Project Boundary  Transmission Line  Connection Point / Substation

Project Detail	
Project Code	SRN5
Project Company	Thai Pat Solar
Type	Solar
SCOD	2568
Coordinate	15.040245, 103.917293
Type of Land Ownership	Owned
Current Land Use	abandoned agricultural land
Transmission Line Length	6.5 km
Transmission Line Arrangement	Using current road Right of Way
Construction & Operation	

BRR4 - Racha Solar



Project Boundary
 Transmission Line
 📌 Connection Point / Substation

Project Detail	
Project Code	BRR4
Project Company	Racha Solar
Type	Solar
SCOD	2568
Coordinate	14.93251, 103.145938
Type of Land Ownership	Owned
Current Land Use	abandoned agricultural land
Transmission Line Length	12.0 km
Transmission Line Arrangement	Using current road Right of Way
Construction & Operation	

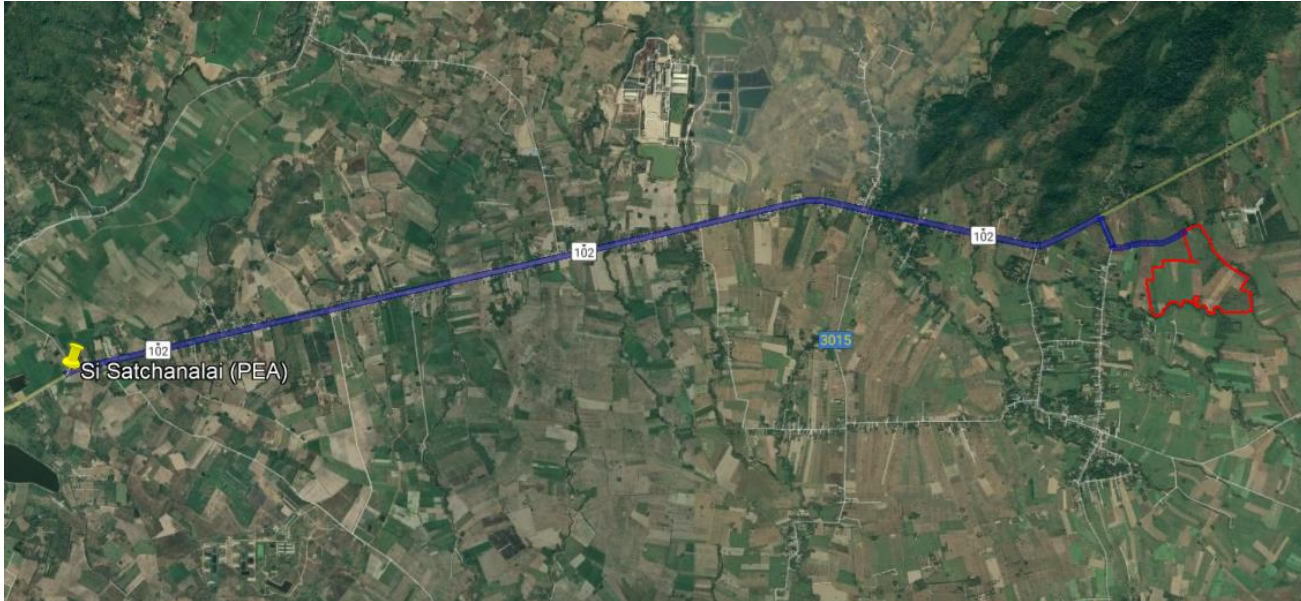
BRR4 - Racha Solar



- Project Boundary
- Transmission Line
- 📌 Connection Point / Substation

Project Detail	
Project Code	BRR4
Project Company	Racha Solar
Type	Solar
SCOD	2568
Coordinate	14.93251, 103.145938
Type of Land Ownership	Owned
Current Land Use	abandoned agricultural land
Transmission Line Length	12.0 km
Transmission Line Arrangement	Using current road Right of Way
Construction & Operation	

SKT10 - Suriya Pat



Project Boundary

 Transmission Line

📌 Connection Point / Substation

Project Detail	
Project Code	SKT10
Project Company	Suriya Pat
Type	Solar
SCOD	2568
Coordinate	17.550165, 99.912515
Type of Land Ownership	Owned
Current Land Use	abandoned agricultural land
Transmission Line Length	13.0 km
Transmission Line Arrangement	Using current road Right of Way
Construction & Operation	

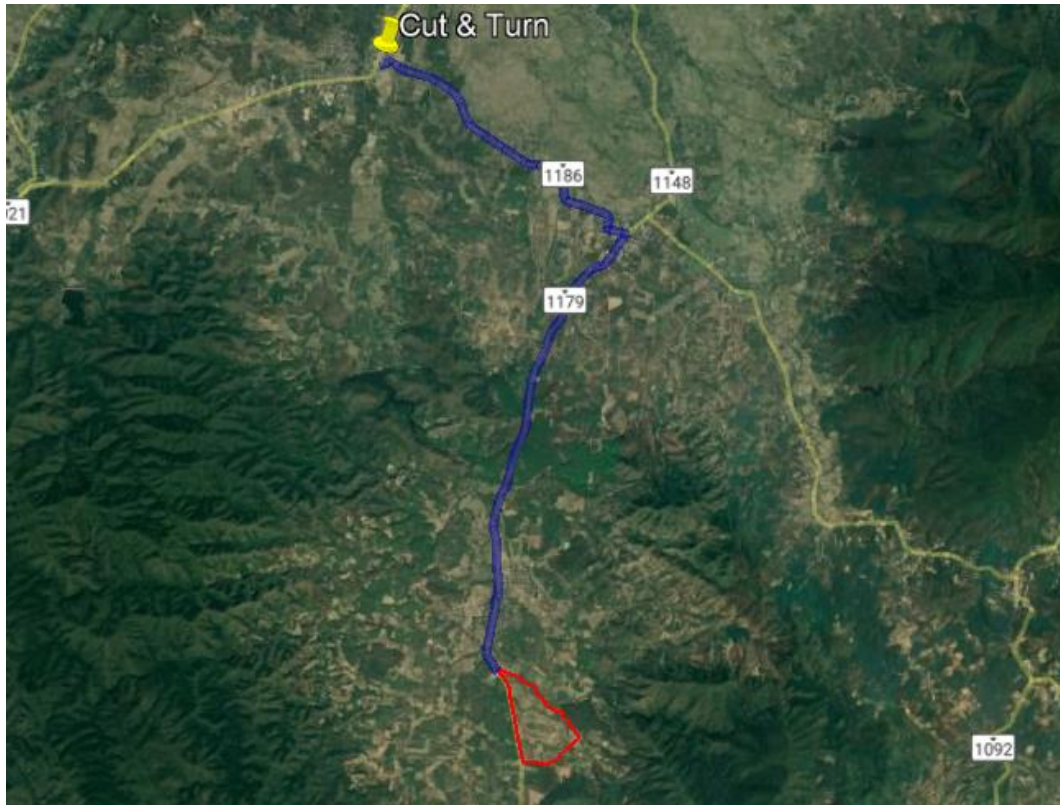
SKT10 - Suriya Pat





- Project Boundary
- Transmission Line
- 📌 Connection Point / Substation

Project Detail	
Project Code	SKT10
Project Company	Suriya Pat
Type	Solar
SCOD	2568
Coordinate	17.550165, 99.912515
Type of Land Ownership	Owned
Current Land Use	abandoned agricultural land
Transmission Line Length	13.0 km
Transmission Line Arrangement	Using current road Right of Way
Construction & Operation	

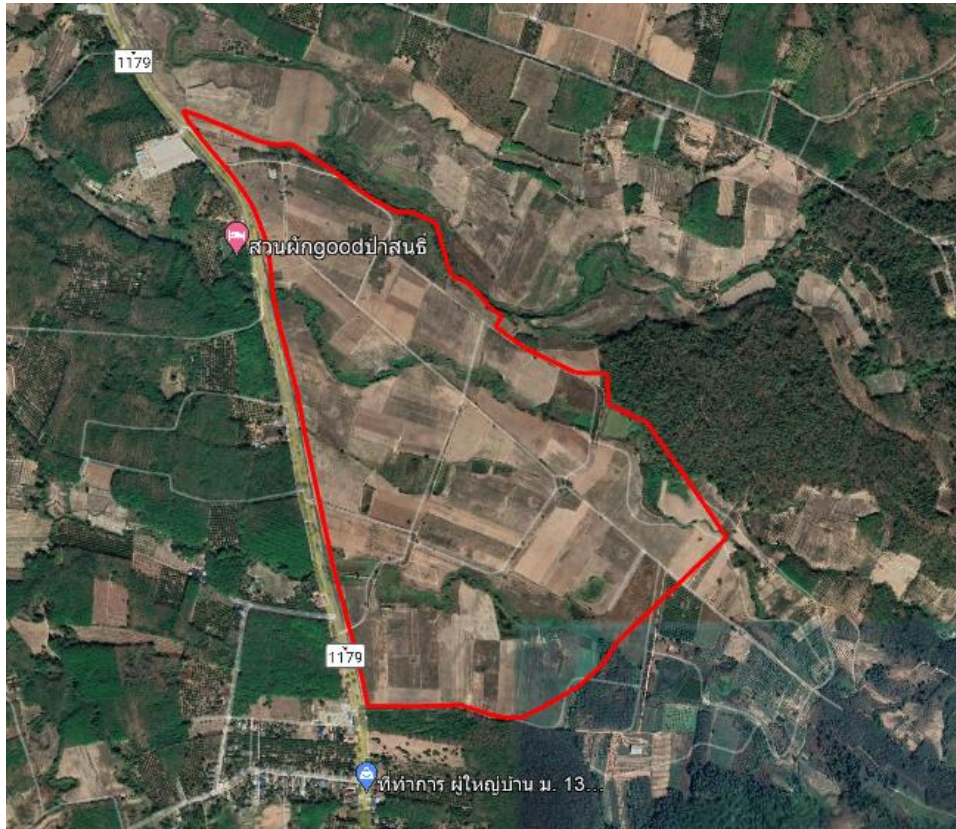
PYO1 - Duang Tawan Phalangngan



 Project Boundary  Transmission Line  Connection Point / Substation

Project Detail	
Project Code	PYO1
Project Company	Duang Tawan Phalangngan
Type	Solar BESS
SCOD	2568
Coordinate	19.385634, 100.303959
Type of Land Ownership	Owned
Current Land Use	abandoned agricultural land
Transmission Line Length	16.2 km
Transmission Line Arrangement	Using current road Right of Way
Construction & Operation	

PYO1 - Duang Tawan Phalangngan



- Project Boundary
- Transmission Line
- 📌 Connection Point / Substation

Project Detail	
Project Code	PYO1
Project Company	Duang Tawan Phalangngan
Type	Solar BESS
SCOD	2568
Coordinate	19.385634, 100.303959
Type of Land Ownership	Owned
Current Land Use	abandoned agricultural land
Transmission Line Length	16.2 km
Transmission Line Arrangement	Using current road Right of Way
Construction & Operation	

Summary Key Points



1. The project owns all the land and has Title Deeds.
2. The transmission line planned to construction on the PEA's Right of Way area.

Agenda



1. Project Overview
2. Site Information 12 Project SCOD Y2024-2025
3. Project Timeline

Timeline for Document List



Document List	COD 2024 : 5 Project	COD 2025 : 7 Project
1. Engineering Drawing	Complete	Oct 2023
2. COP (Preliminary Approved)	Complete	1 Jan 2024
3. COP (Final Approved)	15 Sep 2023	1 April 2024
4. ESIA Report	Jan 2024	Jul 2024
5. Signed PEA - 115kV TL EPC Contract	[Sep 2023]	[Jul 2024]
6. Start Construction	[Jan 2024]	[Jan 2025]
7. SCOD	[31 Dec 2024]	[31 Dec 2025]

Thank You

